



**NOW EVERYONE HAS A VOICE.**

**MTN INTRODUCES FOUR NEW PACKAGES TO SUIT EVERYONE'S NEEDS.**

HUNT LASCARRS TBWA FMC 561838

**Companion**



A low cost offline package designed to enhance your personal security. Your monthly subscription of just R114-50 (incl. VAT) includes 15 FREE offline minutes and access to Control, a personalised reassurance service. Now available as a Pay as you go option. No contracts, no bills, no credit checks. Instant access.

**PERFORMER**



An offline package that'll help you manage your business more effectively. Your monthly subscription of R273-60 (incl. VAT) includes 120 FREE offline minutes and access to business-related services like Forecast and How Jones Forecast so that your office can be wherever you are.

**Pulse**



An offline package that gives you the convenience of constant contact socially and in business. Your monthly subscription of R148-20 (incl. VAT) includes 120 FREE weekend offline minutes and free access to services such as Ontrack and Computerize.

**PINNACLE**



An offline package designed to improve your productivity. Your monthly subscription of R 678-30 (incl. VAT) includes 500 FREE offline minutes and access to a full range of value-added services such as Ontrack, Directors, Forecast and How Jones Forecast.

**It's Your Call**  
**MIN**

The Better Connection

- **MTN 0800 111 106** • **Treant** Callcenter 0800 118 388 • **Saban** 0800 332 328 • **TE** (011) 803 8888 • **Mathu** Callcenter 0800 123 511 • **Madagascar** Callcenter 0800 113 301
- **First Call** (011) 233 2650 • **Callcenter** 0800 111 808 • **Alere** Callcenter/Passer Callcenter 0800 114 243 • **Melodi** Callcenter 0800 114 990 • **Adriano** Callcenter (011) 233 2424
- **MTN** bills, all calls for the first unit at 60 seconds, and in 30 second increments thereafter. • Additional calls made over the inclusive minutes will be charged at the specific per minute call rate applicable to the subscriber's package. • Services contained in each package are inclusive free of any additional monthly subscription fee for the use of these services. Calls made to these services are eligible for deduction from your free minutes. • Pulse free weekend offline minutes are from Friday midnight to Sunday midnight.



**SOUTH AFRICAN  
MASTERS  
WATERPOLO TOURNAMENT**



**7, 8, 9 MARCH 1997**  
**Souvenir Brochure**

# Tread Carefully!

n area of tyre barely bigger than your hand keeps you in touch with the road. So a tyre's tread should concern you. The engineering that goes into a Continental tyre ensures that it does more than keep touch. grips like no other tyre. German engineering where you need it most on a car. **Continental**

REF: 2604/87/11 TO BUREAU 71 3002/8

## MESSAGE FROM THE PRESIDENT

*Another season, another kilogram, a few more wrinkles! So what!*

*It is my pleasant duty once more, to welcome you all to the 10th Annual South African Master Water-Polo Tournament.*

*Firstly, a big thanks to Eastern Transvaal Master for a magnificent Tournament at Boksburg last year - a great success all round!*

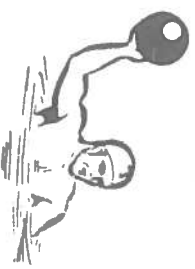
*Our hosts this time are Eastern Province Masters - lets trust the friendly City lives up to its name again, and the high standard set by EP Masters at their first Masters hosting, is maintained.*

*Lets also hope that the spirit of past Masters is also maintained - a spirit in the mind, the body, and the glass!*

*So good luck to all the players (be nice to the referees and each other), and especially to the Eastern Province Masters Committee under the guidance of Rob Rowles, for a super and successful Tournament.*

*Nice to see you in Port Elizabeth!*

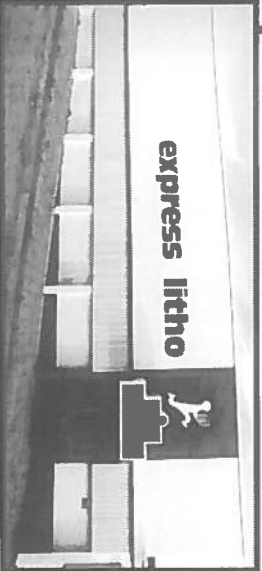
**NEVILLE CLARENCE**





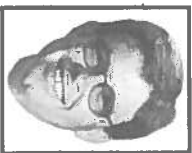
# “Tall people see further!”

*“It is this philosophy that has seen Express Litho Services go from strength to strength over the last 35 years. Brian Driscoll and John Summerton are well known to many people throughout the city. Together they have always upheld a strong tradition of integrity, speed of service and quality printing. The next 35 years are sure to bring more challenges which will be met with the same tenacity and commitment to service that ensures that you, the customer, get exactly what you need, from your printer.”*



**express litho**

for all your printing requirements....  
large or small – at a competitive price.



Richard Layt

*“Sorry we did not have time to pose and play with ladders but we have been too busy helping to reach new heights!”*



David Driscoll

Tel: 54-1315

Fax: 54-1366

**express litho services cc**  
8 Attee Street (off Albany Road), Port Elizabeth 6001



OPPOSITE PAGE 287

## Message from Chairman E.P. Masters Waterpolo Association

*It's great to welcome you all to the Tenth Anniversary of the National Tournament and the second to be held here in Port Elizabeth.*

*A special word of welcome to the visiting "Polar Bears" from Holland. Please enjoy your stay in Port Elizabeth and South Africa. We have laid on the venues for the waterpolo and the functions and leave it to you to make the most of both, which we have no doubt you will.*

*Old friendships will be renewed and new ones made this weekend and we are sure you will take away pleasant memories of the "Friendly City".*

**ROB ROWLES**



**BERGSPORT**  
THE HIKING, CAMPING AND ROCK CLIMBING SPECIALISTS

Shop 7, Ninth Avenue Centre  
Main Road, WALMER, Port Elizabeth.

**YOU WILL FIND A WIDE RANGE OF LOCAL AND IMPORTED EQUIPMENT TO CATER FOR THE NOVICE, AS WELL AS THE EXPERIENCED ADVENTURER AND TRAVELLER.**



(041) 511363

# WALMER PARK SERVICE CENTRE

Walmer Park  
SHOPPING CENTRE  
16TH AVENUE, MAIN RD, WALMER

Guarantees on all work done • Senior citizens' discount

Genuine honest, reliable service

## 50% DISCOUNT ON SELECTED ITEMS

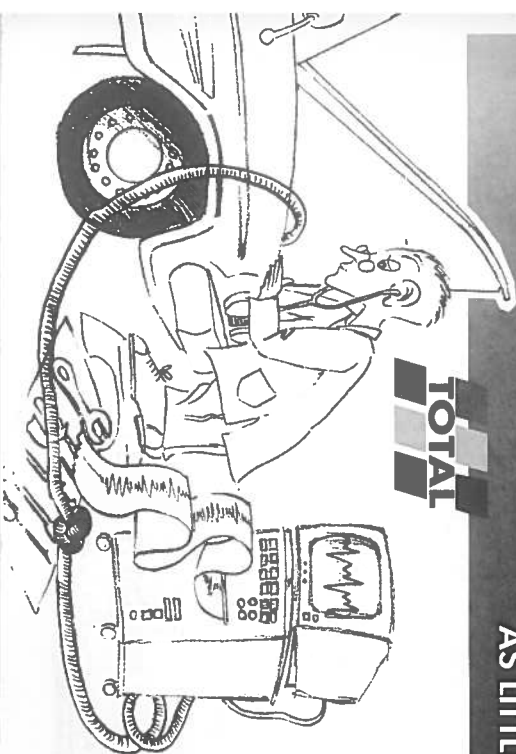
- Services on all makes of vehicles
- Full electronic diagnostic examinations
- Exhaust systems - up to 50% discount
- Tyres - new and retread - up to 20% discount
- Shocks - up to 50% discount
- Batteries

## TOTAL AUTO WASH!

THE MOST TECHNOLOGICALLY  
ADVANCED CAR WASH IN THE CAPE!

- 7 BRUSH TUNNEL

WASH, WAX AND BLOWDRY IN 3 MINUTES FOR  
AS LITTLE AS R7,001



Phone 38 3080  
and ask for DOUG  
for free quotes  
and specials on  
offer

# EASTERN CAPE MOTORS

Mazda Mitsubishi ranges of fantastic cars. Pick-Ups  
Buses — Sport Coupes and Pajero 4x4s  
See this exceptional line of Mazda Mitsubishi vehicles today



323 Hatch and Sedan Range



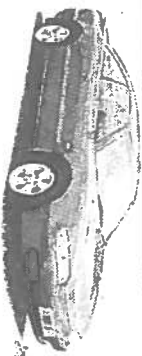
1600 or 1800 Etude



626 20-2l - 2.5 V6



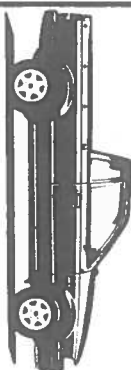
Astina 1.8l Full house



MX6 Coupe V6 2.5 24 valve



Pajero 2,8 Turbo Diesel 3,0l and 3,5l



Ruester 1/2 ton 130 - 160 - 160l



1-Ton full range petrol and diesel



Space Star 10-seater



L300 1-ton truck or chassis cab



Marathon 16-seater or panel van



Double Cab 2,2 or V6 3 litre

We also have a full range of Mitsubishi Canter Trucks Petrol and Diesels in stock  
Phone now 544326

# EASTERN CAPE MOTORS

(041) 544326  
PORT ELIZABETH

9229100  
UITENHAGE

(0431) 23041  
EAST LONDON

(0433) 33211  
KING WILLIAMSTOWN



# Weekend Programme

## THURSDAY 6 MARCH

18:30 S.A. Masters Waterpolo A.G.M.  
(Crusaders Sports Club)

## FRIDAY 7 MARCH

08:00 – 17:12 Round Robin games, Newton Park & St George's Pools  
Evening at Toby Joe's – The Pavillion, Brookes Hill : Meal Provided  
*(Meal tickets must be produced)*

## SATURDAY 8 MARCH

08:00 – 17:36 Round Robin games, Newton Park & St George's Pools  
Playoff games  
Tapas/Pine Lodge - Marine Drive:  
Meal provided *(Meal tickets must be produced)*

## SUNDAY 9 MARCH

08:00 – 09:40 Playoffs at Newton Park Pool  
08:00 – 11:45 Playoffs & Finals at St. George's Pool  
followed by Prize Giving and Snoek Braai  
– King's Beach Lifesaving Club House

## MOVING INTERCITY – PUT YOURSELF IN OUR CAPABLE HANDS



At **Ward Afrován** hands on management is our policy. We own the company and have many years experience in household removals enabling us to offer the very best personal service. To ensure expert attention to detail, responsibility at every stage is dealt with by the owners.

- Bob Simpson leads the team and specialises in customer liaison
- Marius Pienaar co-ordinates sales and marketing.
- Andre Bekker looks after logistics and personally controls the move from start to finish.
- Lionel Kretzmann maintains the fleet of vehicles in immaculate condition



**WARD AFROVAN**

Tel: (041) 611416



**HOUSEHOLD REMOVALS**

## RULES OF THE TOURNAMENT

1. Over 30 years of age at date of tournament.
2. Over 40 years of age at date of tournament.
3. Handicapping based on average age of seven youngest members of team.
4. One goal for every two years difference in average age subject to a maximum of three goals.
5. Average age is rounded up or down eg 1,4 becomes 1 and 1,5 becomes 2.
6. Players over the age of 40 may play down but players under 40 may not play up, provided the average age of seven youngest members is still over 40, eg. a team can have three players of 39 years and four players of 40 years and they will be eligible to play in the over 40's category.
7. Current international or Provincial 'A' players are eligible only for the over 30's category no matter what their age is.
8. Dispensations may be permitted in breach of above provided written representation is made to the Tournament Committee and permission received, prior to the Tournament.
9. The tournament schedule is extremely tight. Missed games will be played after the last game.
- 10: All games, including Round Robin, Playoff section and finals, shall consist of two periods of 10 minutes each, with a break of 1 1/2 minutes.
11. In the event of a tie in the Round Robin section, each team shall be awarded one point.
12. At the completion of the Round Robin, should two or more teams have the same points score within a section, positions will be decided by goal average – ie "goals for" divided by "goals against".
13. In the event of a tie in the Playoff/Final section, the result shall be decided by penalties. Each team to have three penalty attempts. If after three penalties, a tie still exists, each team will have alternating penalty attempts on a "sudden death" basis.

*NB: No glass allowed in pool area during the tournament, please.*

# MEDICAL AID?

## Questions –

- DO YOU HAVE A MEDICAL AID?
- DOES YOUR MEDICAL AID SUIT YOUR NEEDS?
- ARE YOUR PREMIUMS ALWAYS INCREASING, WHILEST YOUR BENEFITS ARE DECREASING?
- DOES YOUR MEDICAL AID GIVE YOU A CASH INCENTIVE TO CONTROL YOUR CLAIMS?
- DO YOU WANT YOUR MEDICAL AID COMPAREI TO OTHERS?

**WE ARE MEDICAL AID BROKERS WHO  
HAVE ACCESS TO 80 SCHEMES THROUGH  
11 OF THE BEST ADMINISTRATORS!**

To save money and improve your benefits call:

**IAN VAN DER HEEVER** OR **BERT HALBER**

Cell: 082-6524174

Cell: 082-572224

Tel.

(041) 353612

Fax

(041) 38301

**Facts**  
**Figures**  
BROKERS (P.E.) (PTY) LTD.

## TEAMS / SECTIONS

### Under 40 (Pool C)

Saints	DHSOB
Zimnat	WPV/G
Wanderers	WP B
NTvl 30	Pinetown
ETvl 30	EP 30
Tvl 30/1	Tvl 30/2

### Over 40 A Pool | B Pool

NTvl 40	Tvl 40/1
EP 40	WPGG
ETvl A	Tvl 40/3
Tvl 40/2	Border
Tvl 40/4	Natal Cygnus
WP Orcas	ETvl B
ETvl C	Polar Bears
Zulu	EPZim

7 Games { 6 Games – cross pool  
1 Game – intra pool  
1 game - playoff

7 Games – intra pool  
1 game - playoff



Insurance Brokers: Short Term  
Versekeringsmakelaars: Korttermyn

**YOUR  
PREFERRED  
BROKER**

For all you  
Building Requirement

**Domestic, Industrial, Commercial or New &  
Alteration Work**

*contact*  
**DERECK BECH**

# Beckwii Construction

Tel: 33-6952 / Fax: 33-6950



**UNDER 40 POOL "C"**

**WESTERN PROVINCE V/G**

1	Jack Beukes	57	Provincial
2	Peter Storzner	40	Springbok
3	Gordon Currie	46	Provincial
4	Clive van Onselen	32	Provincial
5	Pat Ferreira	36	Provincial
6	Guy Ilesley	40	Provincial
7	Knut Beining	36	Club
8	Ian Trethowan	36	Zimbabwe
9	M. Voges	30	Provincial
Average		36	

**NATAL - PINETOWN**

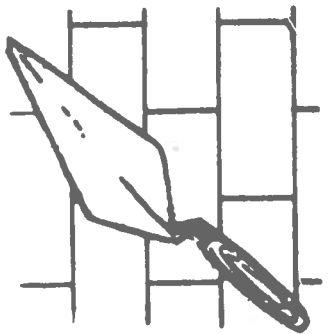
1	J. Smit	45	Club
2	A. Wilson	31	Club
3	A. Gibb	34	Club
4	G. Antonizzi	34	Club
5	D. Talford	31	Club
6	M. Marais	43	Provincial
7	K. Fritsch	38	Provincial
8	N. Besselar	39	Club
9	R. Sharrack	43	Club
10	C. Morris	38	Provincial
Average		35	

**EASTERN TRANSVAAL 30**

1	Z. Hutchison	31	Club
2	E. Liechi	34	Club
3	W. Smith	32	Club
4	C. Claase	31	Club
5	G. Slater	31	Club
6	S. Mackay	36	Prov. B
7	A. Fernandez	38	Prov. B
8	N. du Toit	41	Club
Average		34	

**TVL - WANDERERS**

1	B. Baines	42	Provincial
2	Hodgkinson	38	Provincial
3	M. von Bardeleben	34	Club
4	R. Burton Durham	36	Club
5	R. Lindsay	42	Club
6	B. Wolov	38	Club
7	M. Flook	32	Provincial
8	L. Visser	37	Provincial
9	G. Fitch	39	Provincial
10	C. Sampson	38	Club
Average		36	



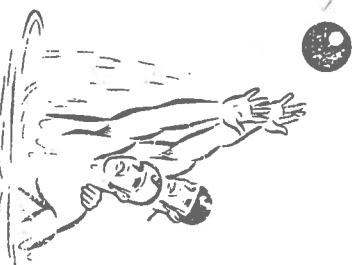
**PRONTOPAVE**

*For all your Paving Requirements*

**Byron Breetzke - Cell. 082-56661232**

**Ross Kolbe - Cell. 082-56661280**

37 7th AVENUE  
WALMER 6070  
TEL: 511847





## UNDER 40 POOL "C"

DHSOB			
1	Stewart Dacombe	33	Provincial
2	Mark D'Offay	30	Provincial
3	Guy McCormack	40	Provincial
4	Kevin McCormack	38	Springbok
5	Chris Morris	44	Springbok
6	Ray McCallum	46	Provincial
7	Hugh Basel	32	Springbok
8	Joey Mulder	35	Provincial
9	David Herd	34	Provincial
Average		35	

ZIMM/NAT			
1	M. Collington	40	Zimbabwe
2	C. Louw		Provincial
3	B. Rowe	32	Provincial
4	D. Viljen	36	Springbok
5	A. Gower	49	Zimbabwe
6	I. Hogson	41	Zimbabwe
7	P. Semple	44	Zimbabwe
8	E. Townsend	42	Zimbabwe
9	A. Lucas		Manager
Average		41	

TVL SAINTS OLD BOYS			
1	AN Other		
2	Paul Harley	35	Springbok
3	Joe Vipond	34	Springbok
4	Gary Eckersley	38	Springbok
5	Pod McLaughlin	34	Provincial
6	Paul Vosloo	32	Provincial
7	Arnold de Nooy	30	Springbok
8	Peter Blaauw	34	Provincial
Average		34	

NORTHERN TRANSVAAL 30			
1	B. Garde	46	Provincial
2	A. Swanepoel	34	Provincial
3	G. Warmbach	34	Provincial
4	T. Smit	41	Club
5	A. Wood	34	Provincial
6	M. de Haast	34	Provincial
7	B. Gerber	40	Club
8	H. v.d. Walt	35	Provincial
9	C. Westdyk	40	Club
10	D. Brennan	35	Provincial
11	J. de Jager	34	Provincial
Average		34	



### In all their 25 years together, Mr Metcalf only cheated on Betsy once.

It happened on the N1 between Beaufort West and Three Sisters.

It was the first time Mr Ivor Metcalf, a travelling sales- man, had driven anywhere without a spare fanbelt. And, as luck would have it, his fanbelt snapped.

For a man who prided himself on keeping his car in pristine condition, the thought of fitting Betsy with anything but a genuine Volkswagen part seemed a betrayal.

But this was an emergency. So, with many apologies to his faithful Beetele, Mr Metcalf plundered the stock of lingerie samples he was carrying.

And with a stocking for a fan-belt, he nursed nearest town where she was fitted with the real th

Betsy now has almost 500 000 on the clock - the fastest or the most technologically-advanced the road. But she is pure VW, with all her under- German engineering, body parts and personality intact. And she's still going strong.

And to make up for his indiscretion, Mr Metcalf treat her to a complete respray. In her original Volkswagen livery. Of course.

**Genuine Volkswagen Parts.**  
Guaranteed for 12 months.

St. George's		Friday 7th Mar. '97		
Game	Time	White	Pool	Blue
1	08h00	N. Tvl	A	Tvl.40 "4"
2	08h24	Tvl.40 "1"	B	ET. "B"
3	08h48	EP.40 "A"	A	Zululand
4	09h12	WP.GG	B	Polar Bears
5	09h36	ET. "A"	A	E.T. "C"
6	10h00	Tvl.40 "3"	B	Border
7	10h24	Tvl.40 "2"	A	W.P. Orcas
8	10h48	Nat. Cygnus	B	EPZIM
9	11h12	Zululand	A	N. Tvl
10	11h36	Polar Bears	B	Tvl.40 "1"
11	12h00	E.T. "C"	A	EP.40 "A"
12	12h24	Border	B	WP.GG
13	12h48	W.P. Orcas	A	ET. "A"
14	13h12	EPZIM	B	Tvl.40 "3"
15	13h36	Tvl.40 "4"	A	Tvl.40 "2"
16	14h00	ET. "B"	B	Nat. Cygnus
17	14h24	N. Tvl	A	E.T. "C"
18	14h48	Tvl.40 "1"	B	Border
19	15h12	EP.40 "A"	A	W.P. Orcas
20	15h36	WP.GG	B	EPZIM
21	16h00	ET. "A"	A	Tvl.40 "4"
22	16h24	Tvl.40 "3"	B	ET. "B"
23	16h48	Tvl.40 "2"	A	Zululand
24	17h12	Nat. Cygnus	B	Polar Bears

Newton Park		Friday 7th Mar. '97		
Game	Time	White	Pool	Blue
1	08h00	Wanderers	C	WP. "B"
2	08h24	Zimnat	C	WP.VG
3	08h48	Saints	C	DHSOB
4	09h12	N.Tvl 30	C	Pinetown
5	09h36	ET. 30	C	EP. 30
6	10h00	Tvl.30 "1"	C	Tvl.30 "2"
7	10h24	Saints	C	WP.VG
8	10h48	Zimnat	C	WP. "B"
9	11h12	Wanderers	C	Pinetown
10	11h36	N.Tvl 30	C	EP. 30
11	12h00	ET. 30	C	Tvl.30 "2"
12	12h24	Tvl.30 "1"	C	DHSOB
13	12h48	Saints	C	WP. "B"
14	13h12	Zimnat	C	Pinetown
15	13h36	Wanderers	C	EP. 30
16	14h00	N.Tvl 30	C	Tvl.30 "2"
17	14h24	ET. 30	C	DHSOB
18	14h48	Tvl.30 "1"	C	WP.VG
19	15h12	Saints	C	Pinetown
20	15h36	Zimnat	C	EP. 30
21	16h00	Wanderers	C	Tvl.30 "2"
22	16h24	N.Tvl 30	C	DHSOB
23	16h48	ET. 30	C	WP.VG
24	17h12	Tvl.30 "1"	C	WP. "B"

# PLUS *all* ADDING VALUE TO YOUR SERVICE

Transform your ordinary telephone by adding many as seven extra functions!

With Telkom's new PlusCall Service you can select individual services that will suit your needs – and won't cost you an arm and a leg.

**ForwardCall** diverts your incoming calls to any other number of your choice.

**WaitingCall** answers a waiting call, when you place your existing call on hold.

**ConferenceCall** allows calls between three people simultaneously.

**SpeedCall** dials preset numbers by only dialing a few digits.

**UrgentCall** connects you to a preset number just by lifting the headset.

**BlockCall** prevents unwanted outgoing calls.

**Direct-a-Call** relays calls made to another city or town.

For more info, give us a call at 0800-4-34567

Keeping you in touch with your world

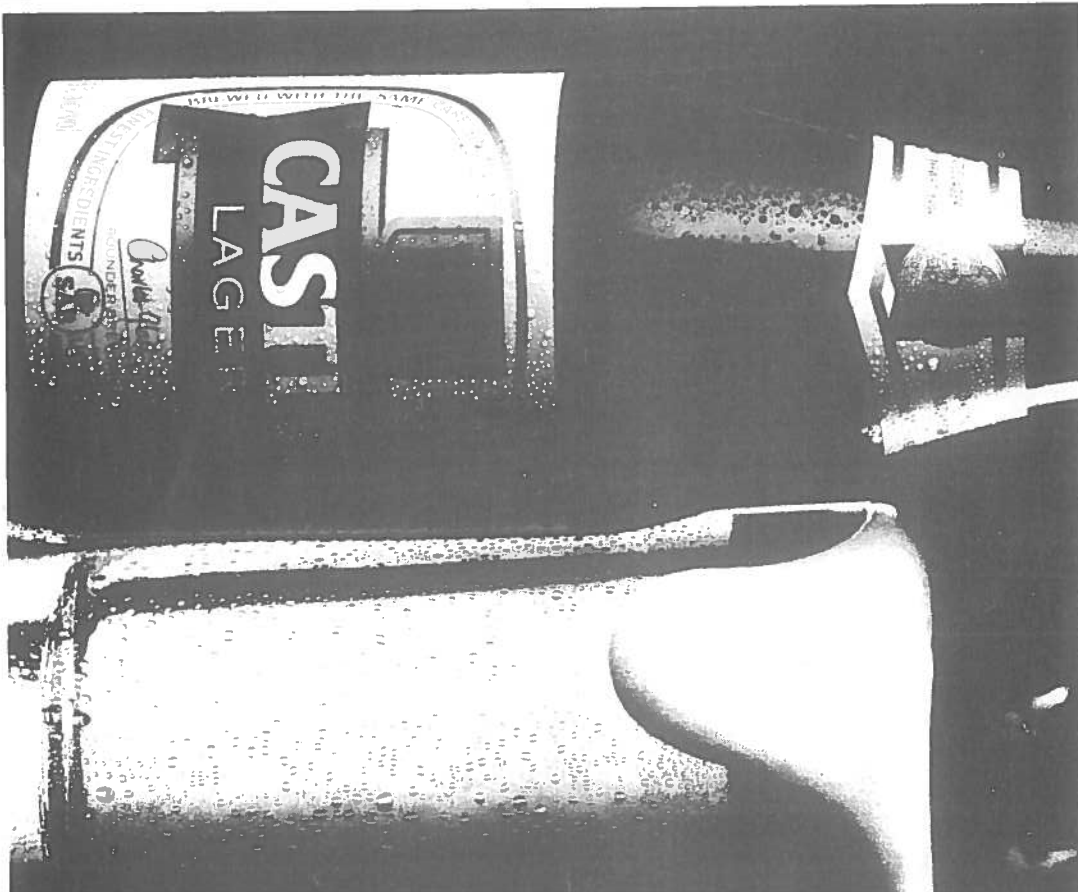


**St. George's Saturday 8th Mar. '97**

Game	Time	White	Pool	Blue
25	08h00	EPZIM	B	Tvl.40 "1"
26	08h24	Tvl.40 "4"	A	EP.40 "A"
27	08h48	ET. "B"	B	WP.GG
28	09h12	W.P. Orcas	A	N. Tvl
29	09h36	E.T. "C"	A	Tvl.40 "2"
30	10h00	Border	B	Nat. Cygnus
31	10h24	Zululand	A	ET. "A"
32	10h48	Polar Bears	B	Tvl.40 "3"
33	11h12	Tvl.40 "4"	A	W.P. Orcas
34	11h36	ET. "B"	B	EPZIM
35	12h00	N. Tvl	A	EP.40 "A"
36	12h24	Tvl.40 "1"	B	WP.GG
37	12h48	Tvl.40 "2"	A	ET. "A"
38	13h12	Nat. Cygnus	B	Tvl.40 "3"
39	13h36	Tvl.40 "4"	A	Zululand
40	14h00	ET. "B"	B	Polar Bears
41	14h24	W.P. Orcas	A	E.T. "C"
42	14h48	EPZIM	B	Border
43	15h12	ET. "A"	A	N. Tvl
44	15h36	EP.40 "A"	A	Tvl.40 "2"
45	16h00	E.T. "C"	A	Tvl.40 "4"
46	16h24	Zululand	A	W.P. Orcas
47	16h48	N. Tvl	A	Tvl.40 "2"
48	17h12	EP.40 "A"	A	ET. "A"
49	17h36	Zululand	A	E.T. "C"

**Newton Park Saturday 8th Mar. '97**

Game	Time	White	Pool	Blue
25	08h00	Zimnat	C	Tvl.30 "2"
26	08h24	Saints	C	EP. 30
27	08h48	Wanderers	C	DHSOB
28	09h12	N.Tvl 30	C	WP.VG
29	09h36	ET. 30	C	WP. "B"
30	10h00	Tvl.30 "1"	C	Pinetown
31	10h24	Saints	C	Tvl.30 "2"
32	10h48	Zimnat	C	DHSOB
33	11h12	Wanderers	C	WP.VG
34	11h36	N.Tvl 30	C	WP. "B"
35	12h00	ET. 30	C	Pinetown
36	12h24	Tvl.30 "1"	C	EP. 30
37	12h48	Saints	C	N.Tvl 30
38	13h12	Zimnat	C	ET. 30
39	13h36	Wanderers	C	Tvl.30 "1"
40	14h00	DHSOB	C	Pinetown
41	14h24	WP.VG	C	EP. 30
42	14h48	WP. "B"	C	Tvl.30 "2"
43	15h12	Tvl.40 "3"	B	Tvl.40 "1"
44	15h36	WP.GG	B	Nat. Cygnus
45	16h00	Border	B	ET. "B"
46	16h24	Polar Bears	B	EPZIM
47	16h48	Tvl.40 "1"	B	Nat. Cygnus
48	17h12	WP.GG	B	Tvl.40 "3"
49	17h36	Polar Bears	B	Border



**The taste that's stood the test of time.**



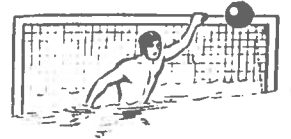
St. George's		Sunday 9th Mar. '97	
Game	Time	White	Blue
50	08h00	6th Pool A	40 6th Pool B
51	08h25	7th Pool C	30 8th Pool C
52	08h50	4th Pool A	40 4th Pool B
53	09h15	3rd Pool C	30 4th Pool C
54	09h40	2nd Pool A	40 2nd Pool B
55	10h30	8th Pool A	40 8th Pool B
56	10h55	11th Pool C	30 12th Pool C
57	11h20	1st Pool A	40 1st Pool B
58	11h45	1st Pool C	30 2nd Pool C

Newton Park		Sunday 9th Mar. '97	
Game	Time	White	Blue
50	08h00	7th Pool A	40 7th Pool B
51	08h25	9th Pool C	30 10th Pool C
52	08h50	5th Pool A	40 5th Pool B
53	09h15	5th Pool C	30 6th Pool C
54	09h40	3rd Pool A	3rd Pool B
<b>Pool A - Over 40 - Interpool - 8 Teams</b>			
<b>Pool B - Over 40 - Interpool - 8 Teams</b>			
<b>Pool C - Under 40 - Crosspool - 12 Teams</b>			

20

## OBJECTIVES OF MASTERS WATERPOLO

*To promote and encourage the sport of waterpolo*  
*To promote the health and well-being of the mature sportsman*  
*To promote non-racial social interaction through sporting clubs on a provincial basis*  
*throughout South Africa*



# KINGCRETE

*Manufacturers & Suppliers of:*  
**CONCRETE PAVING BRICKS**  
**CONCRETE BRICKS & BLOCKS**  
**PRECAST CONCRETE PRODUCTS**  
**SPECIAL PRECAST ITEMS**



167 Haupt Street, Sidwell, Port Elizabeth  
P.O. Box 199, Swartkops 6210  
Tel: 43-7660 Fax: 43-4391

21

*With Compliments*



**DEFY APPLIANCES LIMITED**

204 Kempston Road • Port Elizabeth 6001  
P.O. Box 2971 • North End 6056, R.S.A.  
Telephone: (041) 411 474  
Fax: (041) 413 323





**UNDER 40 POOL "C"**

WESTERN PROVINCE "B"		
1	G. Abuthrot	38 Club
2	J. Crowther	36 Provincial
3	M. Bekker	32 Provincial
4	P. Emley	33 Springbok
5	M. Wallendorf	34 Provincial
6	T. Vaughan	34 Provincial
7	P. Marmacos	39 Club
8	W. Ketteringham	32 Namibia
9	D. Marmacos	37 Club
10	P. Potgieter	33 Provincial
11	T. Yach	39 Provincial
Average		
		34

TRANSVAAL 30/1		
1	D. King	30
2	G. Wilson	37
3	O. Wenger	35
4	S. Kennedy	35
5	G. Tappe	32
6	L. Kane	39
7	G. Ford	30
8	M. Kennedy	37
9	Z. Bergant	40
Average		
		34

EASTERN PROVINCE 30		
1	Ian van den Heever	41 Provincial
2	Mark Edge	38 Provincial
3	Doug James	31 Provincial
4	Richard Nezar	31 Club
5	Dave Rees	35 Provincial
6	Keith Theron	32 Club
7	Craig Vaughan	33 Club
8	Roy McDonough	30 Club
9	Leon Swart	38 Club
10	Trevor Hansen	35 Provincial
11	Duncan Edwards	
Average		
		32

TRANSVAAL 30/2		
1	G. Hanna	36 Club
2	T. O'Gorman	37 Club
3	A. de Witt	31 Club
4	W. Goodwin	37 Club
5	S. McIntosh	37 Club
6	G. Olwagen	36 Club
7	R. Richards	38 Club
8	G. Bowler	36 Club
9	G. Jarvis	37 Club
10	D. Nelson	34 Club
Average		
		36



**Spectrum Brokers**

Contact:  
**MONTY WARE / LAUREN WEAKLEY**

for all your  
**Financial Planning Needs**

Contact:  
**HAYLEY EDWARDS**

for your  
**Household, Motor and other Insurance Requirements**

Office of  
**MONTY WARE**  
☎ (041) 55-9933  
Fax: (041) 55-5344  
✉ P.O. Box 23082  
Port Elizabeth 6000

We offer:  
**PROFESSIONAL, EFFICIENT AND FRIENDLY SERVICE!!!**



**Decor Pro**

**SPECICOAT - GUARANTEED FOR 15 YEARS**

- DECOR PROTECTION
- SPECIALIST FINISHES
- WALLPAPER HANGING
- PAINTING
- BUILDING
- ROOF CLEANING

**DOMESTIC AND INDUSTRIAL**



TEL/FAX: (041) 53-4237  
CELL: 082 5584828  
P.O. BOX 13776, HUMMEWOOD 6013

**EASTERN TRANSVAAL A**

1	R. de Fin	43	Provincial
2	R. Landsman	47	Club
3	J. Pillan	49	Provincial
4	E. Reid	47	Provincial
5	T. Bawden	42	Provincial
6	G. Dunlop	41	Provincial
7	I. Bick	45	Club
8	R. Waldeck	42	Provincial
Average			
		44	

**EASTERN PROVINCE 40**

1	Mally Richards	64	Provincial
2	Brian Driscoll	52	Provincial
3	Phil Moolman	45	Provincial
4	Phil Pretorius	42	Provincial
5	Rob Rowles	44	Provincial
6	Ant Skinner	53	Provincial
7	Steve Theodosiou	40	Provincial
8	John Whitehead	42	Club
9	Martin Jollands	42	Springbok
Average			
		42	

**TRANSVAAL 40/4**

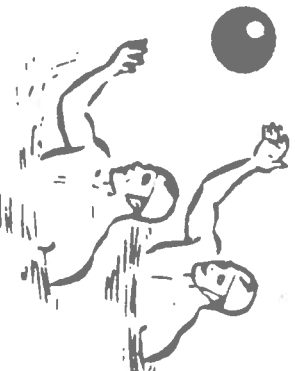
1	L. Herbert	57	Provincial
2	A. Dando	63	Club
3	M. Fine	60	Club
4	I. Kabalin	56	Provincial
5	P. Lynch	40	Club
6	A. Volchansky	62	Club
7	R. Wright	61	Provincial
8	B. McLachlan	59	Club
9	M. Fowlds	57	Club
10	R. Schwartz	56	Springbok
Average			
		55	

**EASTERN TRANSVAAL C**

1	K. Collier	53	Club
2	N. Archibald	48	Club
3	P. Kennedy	51	Provincial
4	E. Tinker		Provincial
5	G. Kemencolou	36	Club
6	G. Gilcrest	42	Club
7	D. Prentice	45	Club
8	D. Charlton	49	Club
Average			
		47	



**T M A**  
**Investment**  
**Products**  
**Services**  
**(Pty) Ltd**



Southern Life Garde  
 70, 2nd Aven  
 Newton Park 60  
 P.O. Box 345  
 Newton Park 60  
 Tel: (041) 355-0  
 Fax: (041) 351-9

**OVER 40 POOL "A"**

**ZULULAND**

1	Martin Els	30	Club
2	Gaan Ferrais	45	Club
3	Paulo Mattioda	33	Club
4	Gary Kraemer	35	Club
5	Rene Baumann	38	Club
6	André Angen-Schau	31	Club
7	Tim Peele	30	Club
8	Keith Coster	30	Club
9	Craig Ithenfeldt	31	Club
Average			
		32	

**NORTHERN TRANSVAAL 40**

1	P. Scoinicky	52	Club
2	G. Robertson	50	Club
3	F. Toerien	44	Club
4	S. Willis	38	Springbok
5	C. Dyason	55	Provincial
6	J. Botha	50	Provincial
7	A. da Costa	53	Provincial
8	H. Uys	45	Provincial
9	T. Downes	48	Springbok
10	R. Gotschalk	44	Provincial
11	N. Pope	48	Provincial
12	J. Hughes	35	Club
13	L. Pellimpasakis	46	Club
Average			
		43	

**TRANSVAAL 40/2**

1	F. Banjies	51	Provincial
2	K. Hugo	45	Club
3	J. Frewen	51	Club
4	A. Dickie	49	Club
5	J. Lee	53	Club
6	W. Clark	45	Club
7	R. Longworth	46	Provincial
8	T. Whittaker	41	Club
9	I. Northcroft	45	Club
10	T. Schmidt	47	Club
Average			
		45	

**W.P. ORCAS**

1	B. Donaldson	41	Club
2	A. Thomas	52	Int.
3	G. Ruscie	42	Provincial
4	M. van Heerden	57	Provincial
5	N. Davies	50	Provincial
6	B. Hill	56	Provincial
7	P. Dukas	55	Club
8	I. Farrow	52	Club
9	P. Gilmore	61	Provincial
10	M. Luitingh		Club
11	R. Keene	43	Club
12	D. Dodd	40	Provincial
Average			
		46	

*Met Compliments  
With Compliments*



★ Clear your conscience with something pure.



**OVER 40 POOL "B"**

**CYGNUS - NATAL**

1	Rod Clack	37	Club
2	Gary Pongelos	53	Provincial
3	John Keyler	47	Provincial
4	Neil Payne	58	Provincial
5	Mike Sammar	50	Provincial
6	Brian Stewart	51	Provincial
7	Doug Butler	44	Club
8	George Watson	47	Club
9	Colin Brent	43	Club
10	Fynie Fritch	37	Provincial
Average			
		44	

**EASTERN TRANSCVAAL B**

1	L. van Zyl		Club
2	D. Freemantle		Club
3	J. Kenegolou		Prov. B
4	D. McLaughlin	49	Club
5	R. Weperner		Club
6	H. Santilian		Club
7	P. Schutte	53	Club
8	S. Schutte		Club
9	P. Law		Club
Average			
		52	

**EPZIM**

1	Ross Clements	62	Club
2	Derek Beck	47	Club
3	Andre Bekker	47	Club
4	Dave Berry	48	Club
5	Byron Breetzke	37	Provincial
6	Mike Farrell	41	Club
7	Charles Treginning	40	Club
8	Barry Theron	41	Club
9	R. Cowan	51	Zimbabwe
10	J. Gould	42	Zimbabwe
11	M. McMohan	44	Provincial
12	G. Rose	41	Zimbabwe
Average			
		41	

**POLAR BEARS HOLLAND**

1	Joop Hake	54	
2	Gerrit van Putten	55	
3	Geertig Zonnenberg	50	
4	Cees Veendaal	58	
5	Siem Vermeulen	55	
6	Ad van den Bent	47	
7	Hans van Spiegel	41	
Average			
		52	

**EXPRESS NO PLATES**

23a DE VILLIERS STREET  
NORTH END  
PORT ELIZABETH  
TELEPHONE: 541501

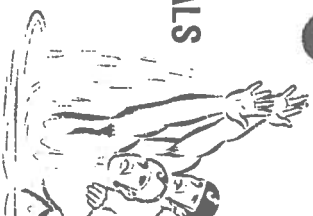
**A.B.C.**  
**ELECTRICAL WHOLESALERS**  
(PTY) LTD.

WHOLESALE SUPPLIERS OF:

- ★ ELECTRICAL INSTALLATION MATERIALS
- ★ DOMESTIC APPLIANCES &
- ★ ELECTRIC POWER EQUIPMENT

8 DRURY STREET  
P.O. BOX 3426  
PORT ELIZABETH

☎ 54-2641





**BORDER**

1	Howard J. Robertson	38	Club
2	Andy Reeves	30	Club
3	Hippo Ryan	54	Provincial
4	Charl Wessels	37	Club
5	Jim Fletcher	40	Provincial
6	Clyde Hare	38	Club
7	Jamie de Jager	36	Provincial
Average		39	

**TRANSVAAL 40/3**

1	B. Albrecht	45	Club
2	A. Rivers	50	Club
3	N. Mannheimer	46	Club
4	V. McLaren	47	Club
5	R. Ranger	50	Club
6	K. Scott	40	Club
7	R. Mackay	40	Club
8	P. Doyle	47	Club
9	R. vd Merwe	42	Club
10	D. Kennedy	40	Club
Average		43	


**W.P. GERRY'S GERIATRICS**

1	Robbie Goodwin	57	Provincial
2	Butch Mackenzie	50	Provincial
3	Butch Louw	40	Springbok
4	Des Elliott	49	Springbok
5	Ross Buchanan	42	Club
6*	John Dickerson	40	Club
7	Shaun Povey	42	Provincial
8	Gerry Croxford	49	Provincial
9	Robbie Templeton	44	Rhodesia
10	Steve Medcalf	53	Rhodesia
11	Chris Albertyn	40	Prov School
Average		42	

**TRANSVAAL 40/1**

1	K. van der Spuy	42	Springbok
2	T. Wright	45	Provincial
3	D. Wright	45	Provincial
4	M. Renwick	47	Springbok
5	N. Clarence	50	Provincial
6	J. Wells	50	Provincial
7	P. White	42	Provincial
8	M. Toet	50	Provincial
9	S. Bukotser	41	Provincial
Average		44	


The official sports drink of the Olympic Games



# POWERADE

a product of The Coca Cola Company

## KENZAN TILES



NEW DIMENSIONS IN DECOR

20 GRAHAMSTOWN RD,  
P.O. BOX 36  
PORT ELIZABETH 60  
SOUTH AFRICA  
TELEPHONE: (041) 54-55  
TELEFAX: (041) 54-42

With Compliments / Met Komplimente

March 1997

# OUT THERE

THE BEST TRAVEL, TOURISM, SPORTS AND HOBBIES MAGAZINE IN AFRICA

JUDGED THE BEST TRAVEL, TOURISM, SPORTS AND HOBBIES MAGAZINE IN AFRICA

**Pedal power**

Is your alarm set for the Argus?

**Robben Island**

Apartheid's hard sell

**Chilean cocktail**

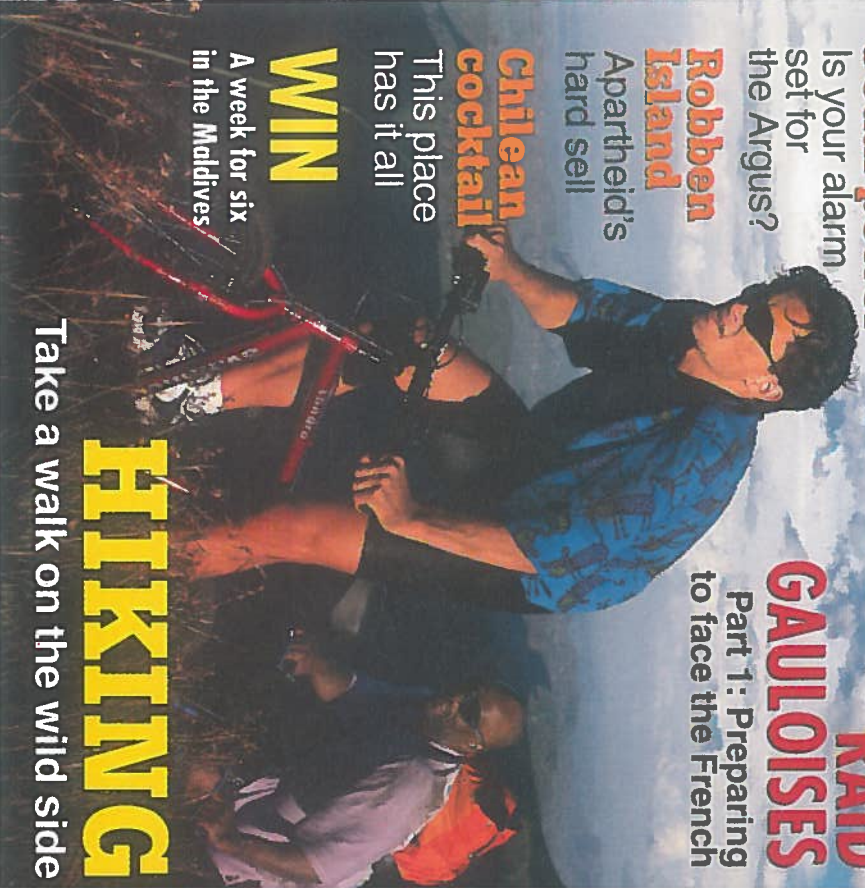
This place has it all

**WIN**

A week for six in the Maldives

**RAID GAULOISES**

Part 1: Preparing to face the French



## HIKING

Take a walk on the wild side

# ON SALE NOW



### Just because it's called a used car, doesn't mean it should feel that way.

Some people use their cars. Others cherish them. We make it our business to tell the difference. We look for tell-tale signs like well-kept upholstery, a complete tool kit, good tyres, and lights and indicators that work perfectly. This test passed, we follow up with a VW approved 80 point mechanical check. Only once we're convinced the vehicle really is as good as new, and qualifies according to our strict age and distance-covered criteria, will we give it the name Mastercar. It should therefore come as no surprise that VW can offer you complete peace of mind with the most comprehensive used car insurance available. That way, you can fall head over heels in love with a Mastercar, confident that it will never let you down.

**Embassy**  
6A Mount Road, Port Elizabeth.  
Tel (041) 54-4311

 **Mastercars**  
Used cars you can buy with complete confidence.